

# EXOGE<sup>®</sup>

# EXOGE<sup>®</sup>

## THE ESSENTIAL PROTECTION AGAINST FROST

### TECHNICAL SHEET EXOGE<sup>®</sup>

EXOGE<sup>®</sup> protects 25 to 50 meters of pipes. It is autonomous and is placed on a PREVENTIVE basis on any installation.

EXOGE<sup>®</sup> WORKS WITHOUT ELECTRICITY.

Start of opening: ca. 1°C (temperature of the water/heat transfer fluid)

Closing: ca. 4°C

Maximum operating pressure: from 0.01 to 8 bar.

For use on pipes with a pressure greater than 8 bar, provide a pressure reducer.

Maximum admissible temperature: 80°C

Weight: 105 g – Length: 45 mm – Width: 23 mm Hexagon 23 mm – ½ thread



### WHO IS EXOGE<sup>®</sup> FOR?



Manufacturers



Installers



Individuals

## AUTOMATIC - ECOLOGICAL - RELIABLE

[www.exogel.fr](http://www.exogel.fr)

Tél. +33 3 80 41 74 04

18, rue d'Assas • 21000 Dijon • France



[www.exogel.fr](http://www.exogel.fr)



# EXOGE<sup>®</sup>

# EXOGE<sup>®</sup>

## FUNCTIONING

### WATER PIPING

**EXOGE<sup>®</sup>** protects pipes against freezing, while avoiding wastage of water.

When the temperature of the water in the pipeline drops, **EXOGE<sup>®</sup>** opens and allows water to flow. Thus, the water coming from the hottest parts upstream of the circuit replaces the water in the pipe.

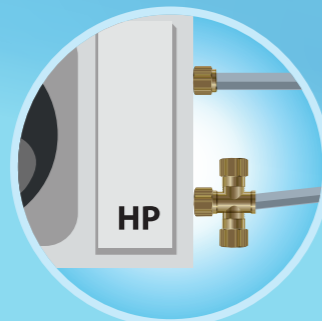
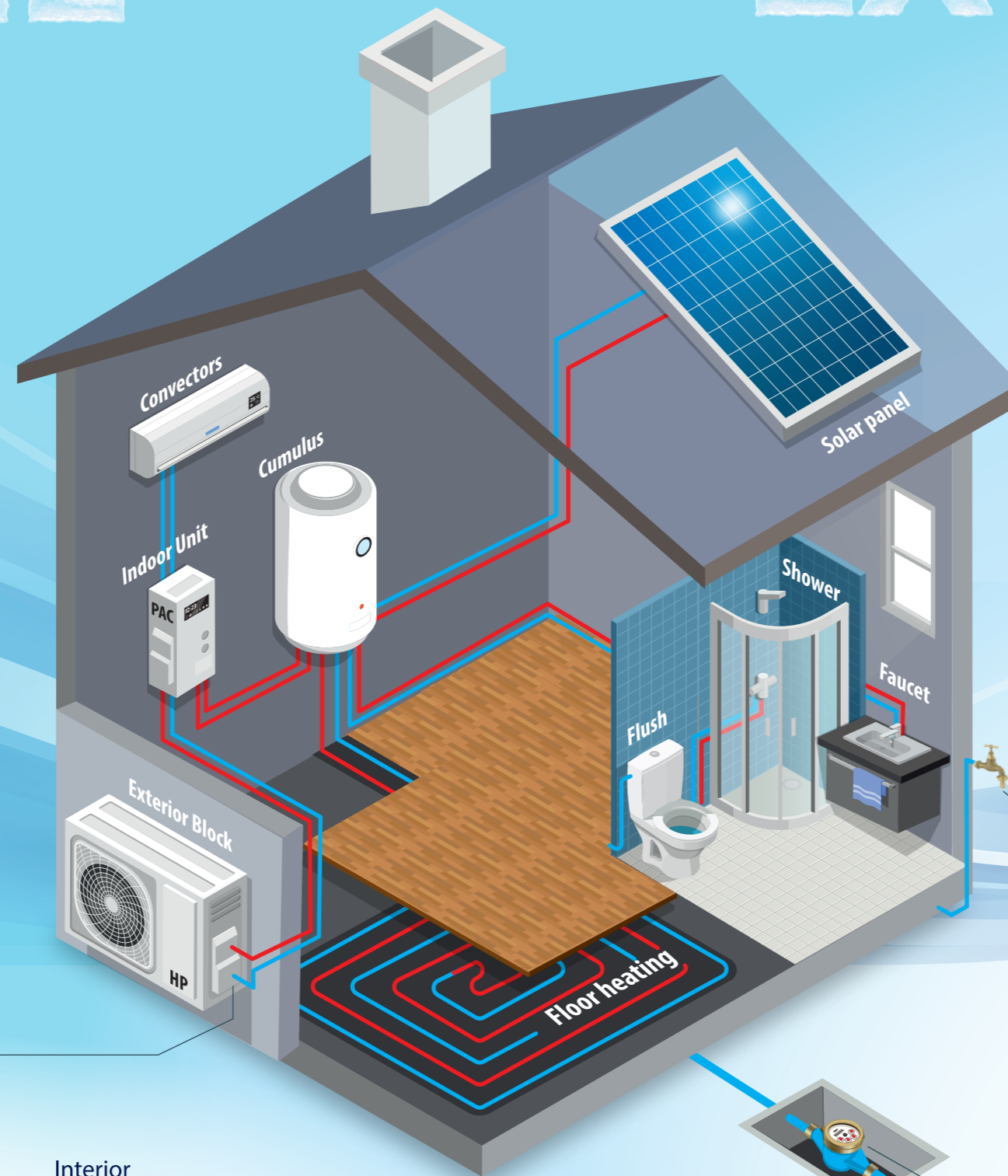
Once **EXOGE<sup>®</sup>** detects a higher temperature, it will close itself and is ready for a new cycle.

### AIR / WATER HEAT PUMP

**EXOGE<sup>®</sup>** AUTOMATICALLY protects your Heat Pump!

In the event of a blackout or power outage, your entire Heat Pump is shut down.

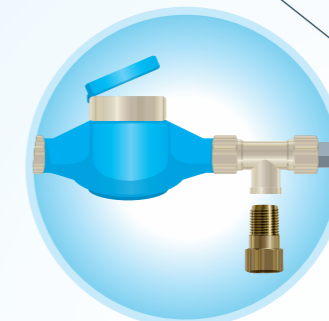
When the temperature of the heat transfer fluid threatens to freeze, **EXOGE<sup>®</sup>** opens and drains the installation to avoid any breakage system.



Heat pump



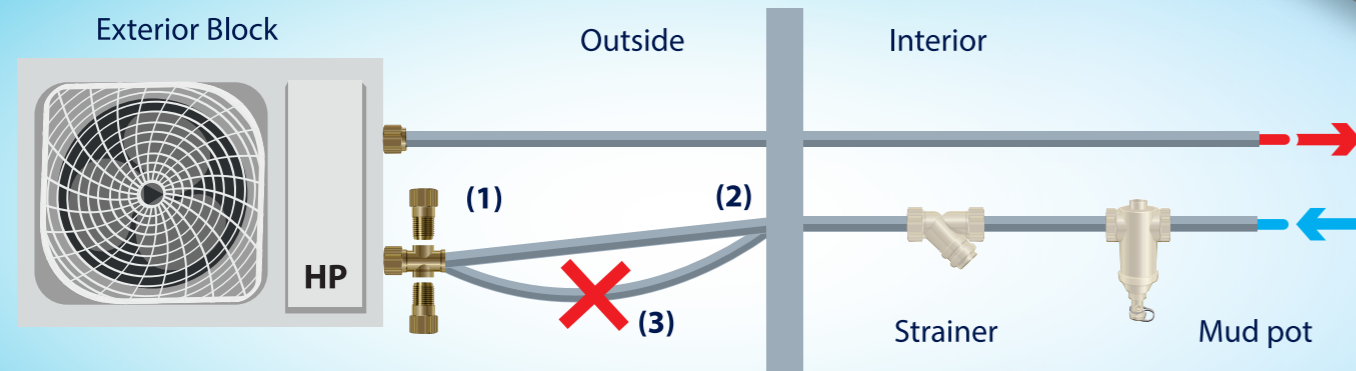
Outside faucet



Water meter



Water pump



[www.exogel.fr](http://www.exogel.fr)

**SAS DEBEAUX**  
RÉGULATIONS

## INGENIOUS AND UNIVERSAL

This ingenious and universal system allows you at a modest cost to protect you against any problem of breakage during cold seasons.

Its principle is based on a simple idea, long used in rural areas: open the outside taps to run the water continuously to avoid freezing.

But **EXOGE<sup>®</sup>** eliminates the disadvantages of such a solution, namely a significant water consumption and management of the water flow required.

**EXOGE<sup>®</sup>** uses this principle while regulating automatically flow, opening and closing via a thermostatic element which reacts to the pipe water temperature.

**EXOGE<sup>®</sup>** is placed on any cleaned installation containing clear water, from the meter to the water heater via the heat pumps, taps and thermal solar panels that either in main residence, secondary, or in companies.

**EXOGE<sup>®</sup>** secures all your pipes and fittings external, without additives or electricity.